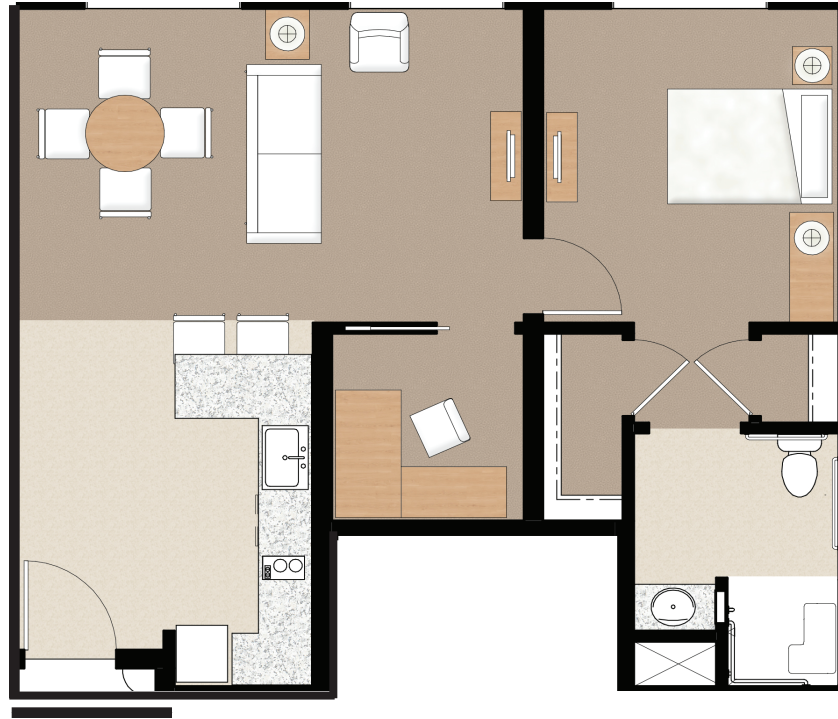




St. Paul's Plaza

The AVA

1 Bedroom plus Den
801 to 811 Square Feet
Independent or Assisted Living



Ava is a spacious one bedroom apartment with the addition of a den which opens to the living area. Ava offers a well appointed kitchen and dining area in one large open space. The bedroom comes with dual closets and plenty of additional storage. The bathroom includes grab bars and emergency response system for maximum safety. Ava can be home for independent residents or for those needing assistance.

Illustrations are artist renderings. St. Paul's Plaza offers several **Ava** apartments, floor plans and square footage do vary. Rates vary depending on resident needs, location of the apartment and services required. Our staff will gladly show you a variety of apartments to fit your personal needs and budget.

License# 374603643

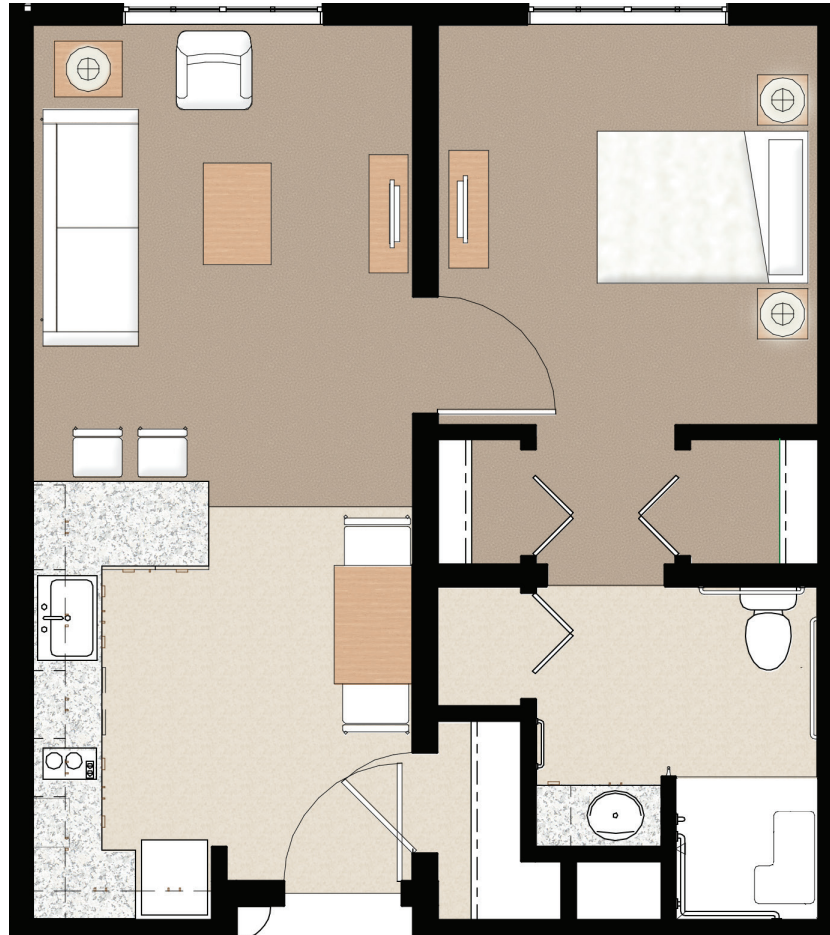




St. Paul's Plaza

The Bonita

1 Bedroom
567 to 788 Square feet
Residential or
Assisted Living



Bonita is a stylish one bedroom, one bathroom apartment with a well appointed kitchen and dining area in one large open space. The bedroom comes with dual closets and plenty of additional storage. The luxury bathroom includes grab bars and an emergency response system for maximum safety. Bonita can be home for independent residents or for those needing assistance.

Illustrations are artists renderings. St. Paul's Plaza offers many Bonita apartments, floor plans and square footage do vary. Rates vary depending on resident needs, location of the apartment and services required. Our staff will gladly show you a variety of apartments to fit your personal needs and budget.

License# 374603643.

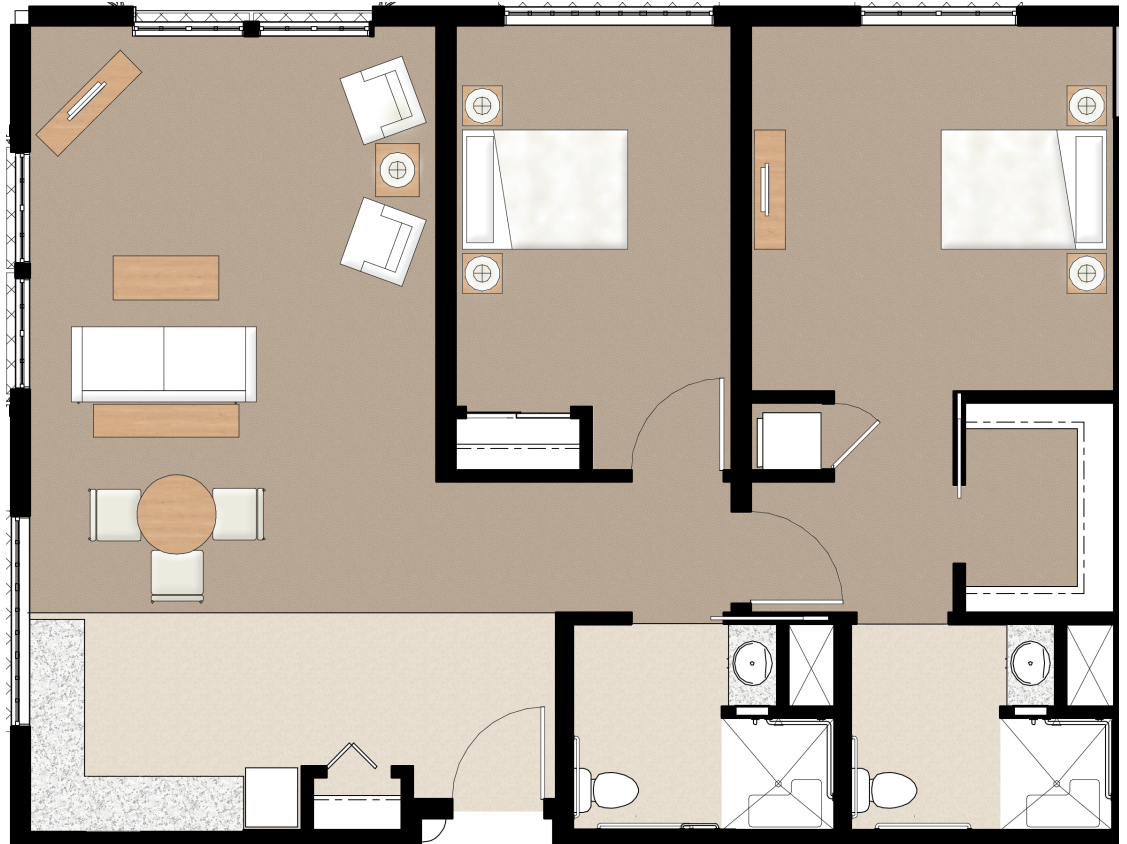


1420 East Palomar Street, Chula Vista, CA 91913 (619) 591-0600 StPaulsSeniors.org
St. Paul's Plaza is a proud member of the St. Paul's Senior Services family. Established in 1960.



The Coronado

2 Bedroom 2 Bathroom
992 to 1,239 Square Feet
Independent or Assisted Living



The Coronado is our largest apartment and comes with two bedrooms and two bathrooms. With plenty of extra storage and full bathrooms there is plenty of room for everyone and everything. Bathrooms come with grab bars and emergency response system for maximum safety. The Coronado also features a full kitchen and spacious living area. They also offer some of our most breathtaking views.

Illustrations are artists renderings. St. Paul's Plaza offers many Coronado apartments, floor plans and square footage do vary. Rates vary depending on resident needs, location of the apartment and services required. Our staff will gladly show you a variety of apartments to fit your personal needs and budget.

License# 374603643.

